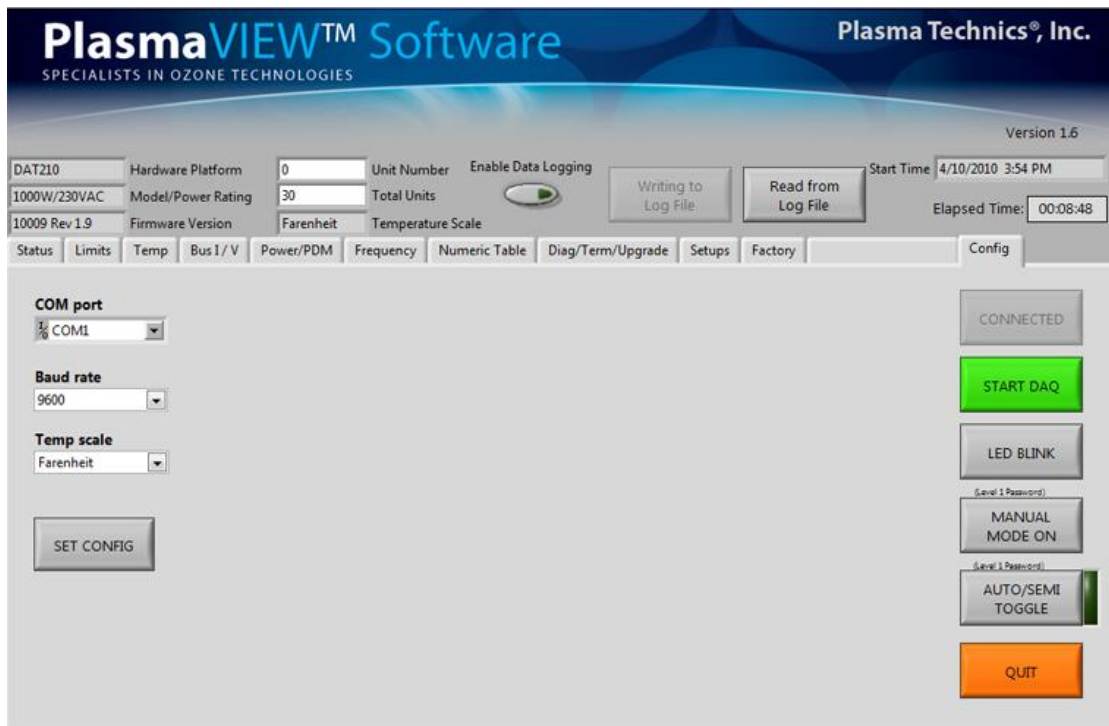


The new **PlasmaVIEW™** software enables unprecedented access to the PlasmaBlock® processor thereby simplifying bench-top setup and field diagnostics. The program displays charts for all measurement parameters with an unlimited time base and disk drive storage for delayed retrieval and emailing. PlasmaVIEW can also be used as a file viewer so data can be studied and expanded at a later time or in another location. Observing a complete functional system over the weekend is as easy as plugging in a laptop computer and spending the weekend with the family.

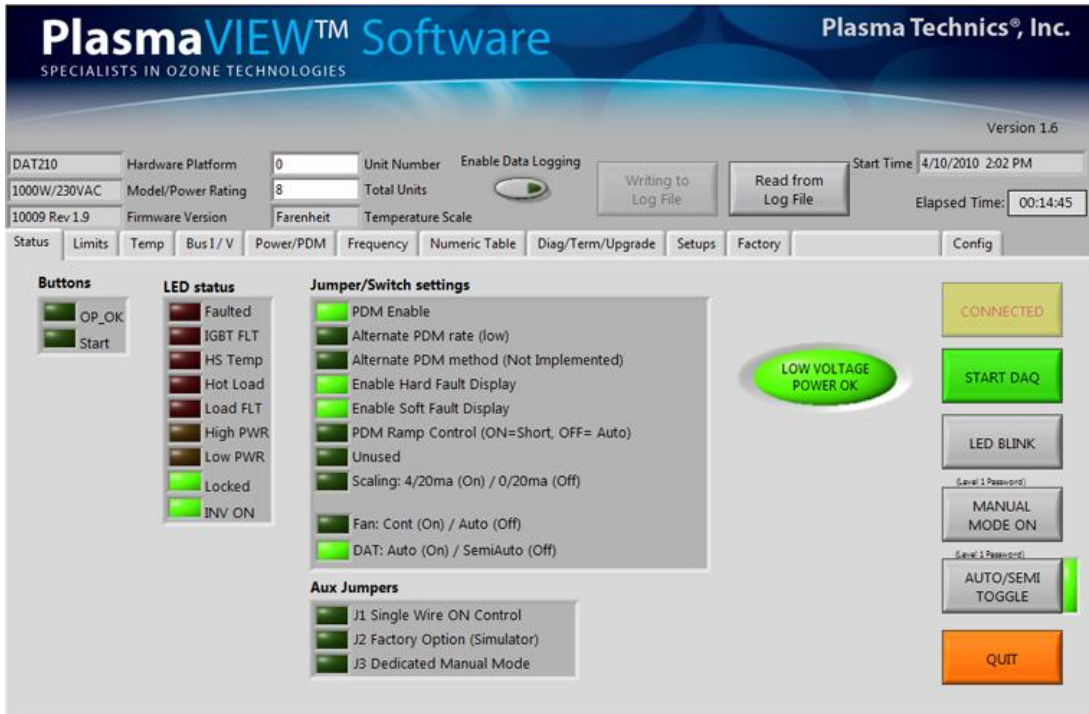
Testing of the fully integrated ozone system is simplified by the programs ability to create a fault at the output terminals. This enables the user to evaluate the total systems response to the PlasmaBlock outputs without the need to jury-rig external wires thereby creating exactly the same outputs as would normally be produced. Want to see how the system handles a fault – just click on the ‘Faulted’ LED in the ‘Diagnostics’ tab.

Supports all DAT series control boards. Supplied with the software is: PTI’s custom RS232 processor interface adapter, USB/RS232 adapter and 10’ RS232 extension cable.

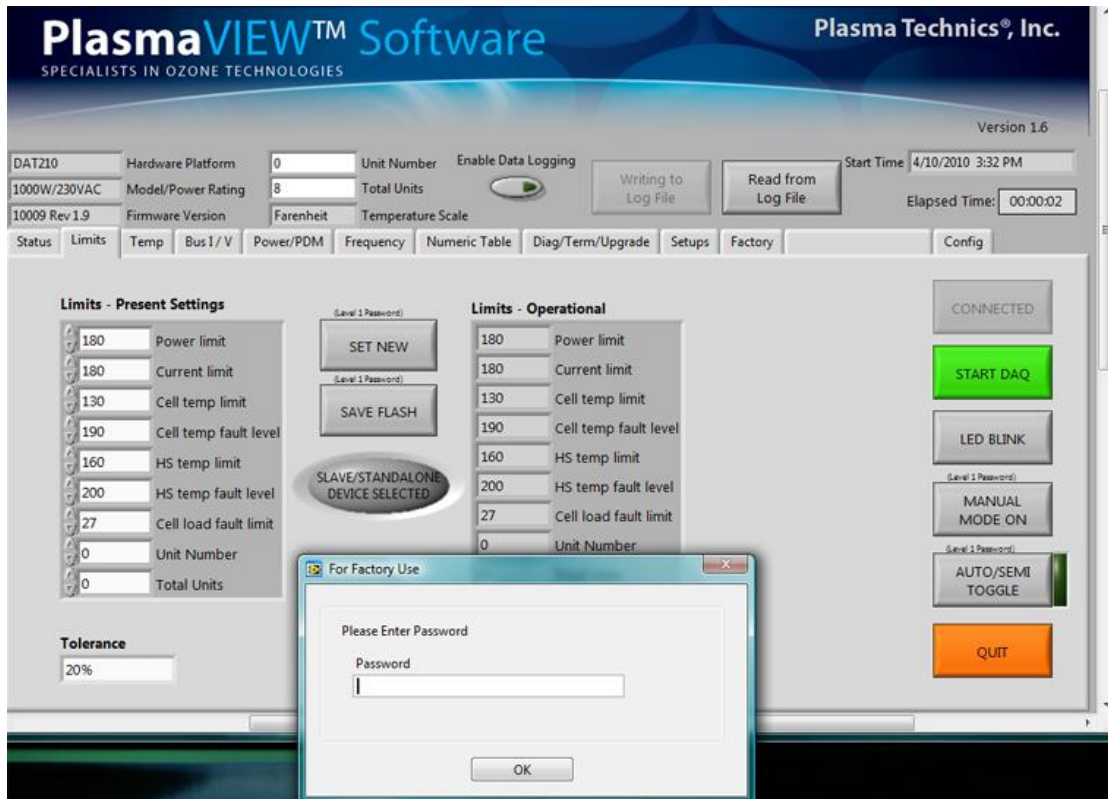
Configuration Tab: Set baud rate, COM port, temperature units for all charts.



Status Tab: Switches, Jumpers, Buttons, LED's and supply voltage.



Limits Tab: Limits table (requires password to change).



PlasmaVIEW™ Software Plasma Technics®, Inc.
SPECIALISTS IN OZONE TECHNOLOGIES Version 1.6

DAT210 Hardware Platform 0 Unit Number Enable Data Logging Writing to Log File Start Time 4/10/2010 2:02 PM
1000W/230VAC Model/Power Rating 8 Total Units Reading from Log File Elapsed Time: 00:14:45
10009 Rev 1.9 Firmware Version Fahrenheit Temperature Scale

Status Limits Temp Bus I / V Power/PDM Frequency Numeric Table Diag/Term/Upgrade Setups Factory Config

Limits - Present Settings

- 180 Power limit
- 180 Current limit
- 130 Cell temp limit
- 190 Cell temp fault level
- 160 HS temp limit
- 200 HS temp fault level
- 27 Cell load fault limit
- 0 Unit Number
- 0 Total Units

(Level 1 Password) SET NEW
(Level 1 Password) SAVE FLASH
SLAVE/STANDALONE DEVICE SELECTED

Limits - Operational

- 180 Power limit
- 180 Current limit
- 130 Cell temp limit
- 190 Cell temp fault level
- 160 HS temp limit
- 200 HS temp fault level
- 27 Cell load fault limit
- 0 Unit Number
- 0 Total Units

Tolerance 20%

CONNECTED
START DAQ
LED BLINK
(Level 1 Password) MANUAL MODE ON
(Level 1 Password) AUTO/SEMI TOGGLE
QUIT

PlasmaVIEW™ Software Plasma Technics®, Inc.
SPECIALISTS IN OZONE TECHNOLOGIES Version 1.6

DAT210 Hardware Platform 0 Unit Number Enable Data Logging Writing to Log File Start Time 4/10/2010 3:54 PM
1000W/230VAC Model/Power Rating 30 Total Units Reading from Log File Elapsed Time: 00:03:11
10009 Rev 1.9 Firmware Version Fahrenheit Temperature Scale

Status Limits Temp Bus I / V Power/PDM Frequency Numeric Table Diag/Term/Upgrade Setups Factory Config

Digital Limits

- 180 Power limit
- 180 Current limit
- 130 Cell temp limit
- 190 Cell temp fault level
- 170 HS temp limit
- 210 HS temp fault level
- 27 Cell load fault limit

Digital Data

- 0 Cell Temp
- 93 Devices Temp
- 3.1 Amps (DC Bus)
- 318.4 Volts (DC Bus)
- 976.4 Watts (DC Bus)
- 22.07 Load Freq (KHz)
- 60 Max Line Freq (Hz)
- 60 Nom Line Freq (Hz)
- 60 Min Line Freq (Hz)
- 22 Voltage Pot T1 (%)
- 100 Freq Pot Tp (%)
- 100 PDM Pot Level (%)

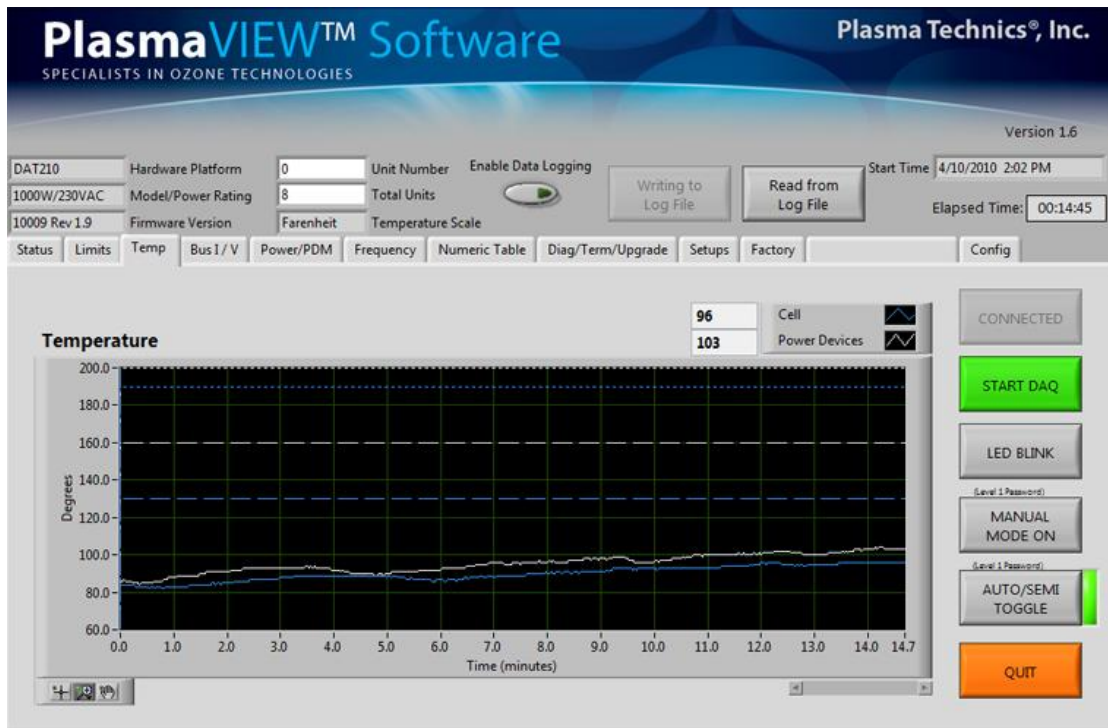
Power Supplies

IGBT FUSE OK

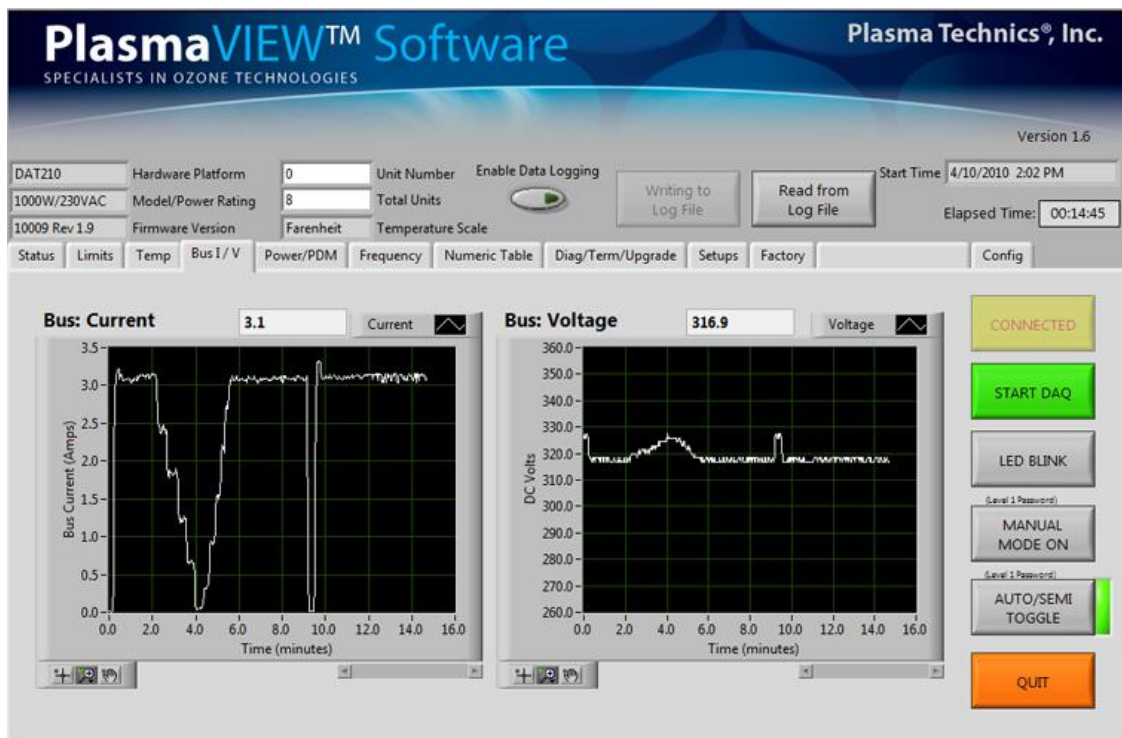
PDM Ramp 100

CONNECTED
STOP DAQ
LED BLINK
(Level 1 Password) MANUAL MODE ON
(Level 1 Password) AUTO/SEMI TOGGLE
QUIT

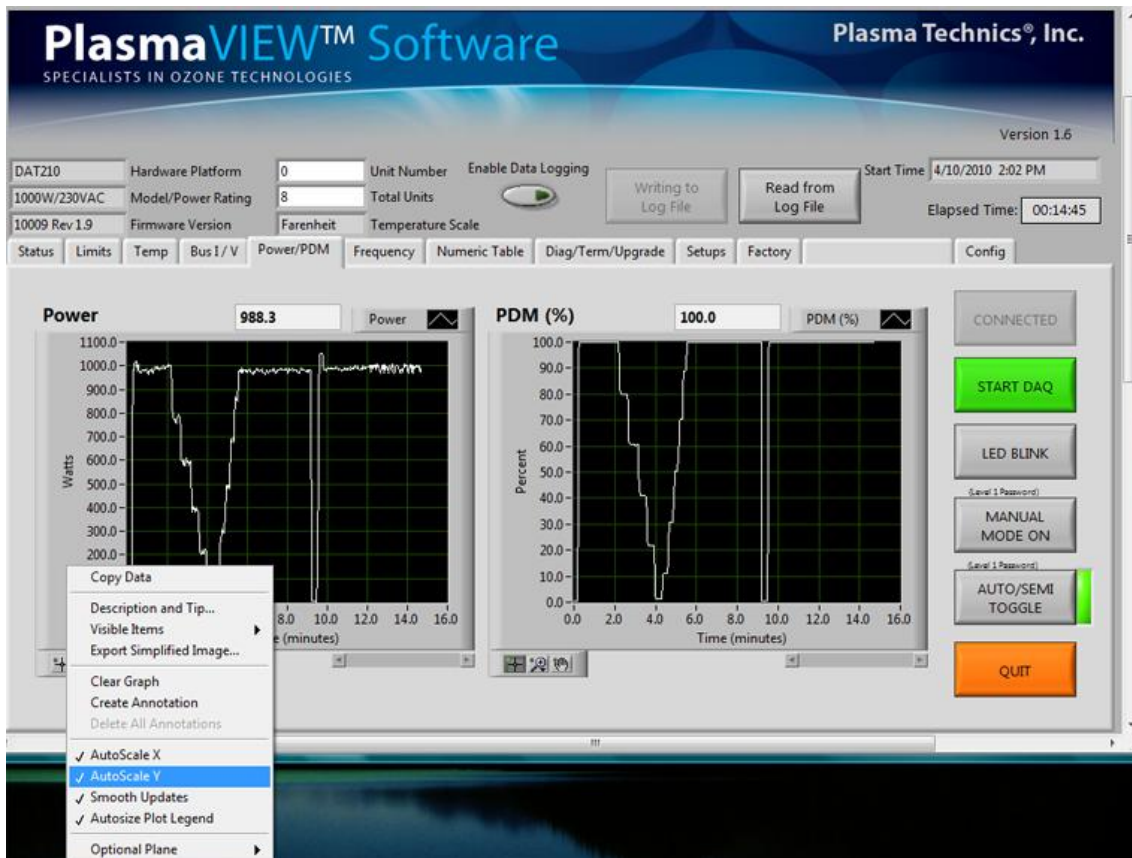
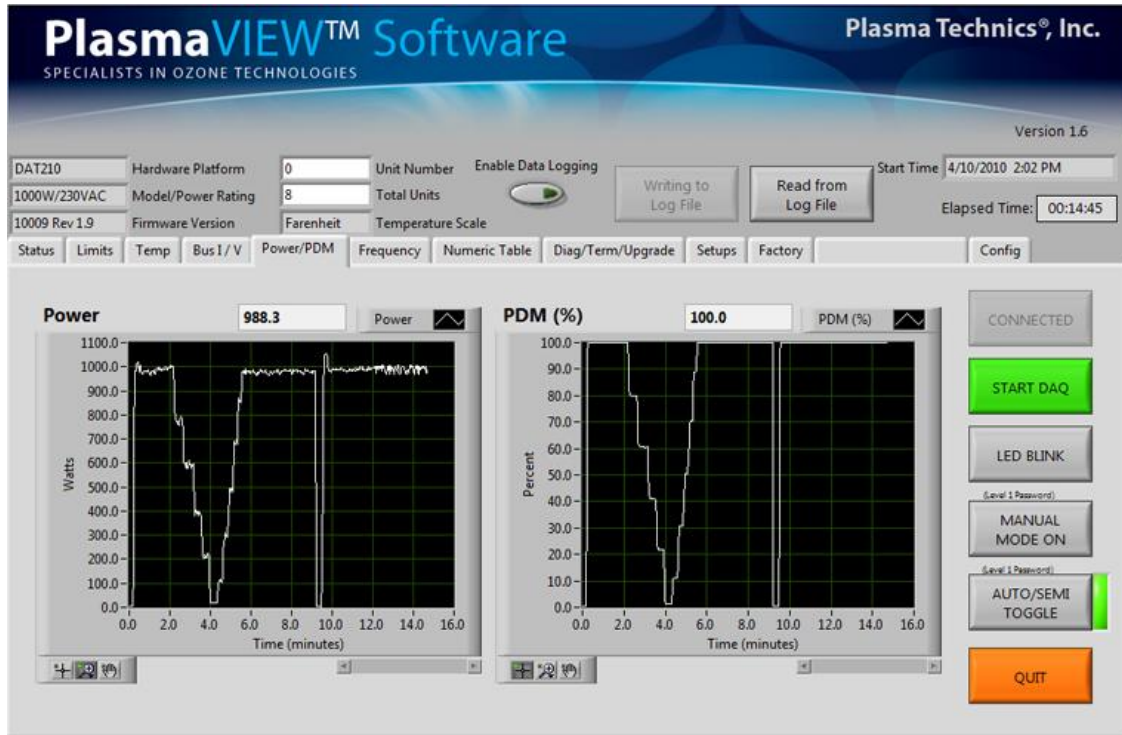
Temperature Tab: Ozone cell and power devices temperatures along with fault limits.

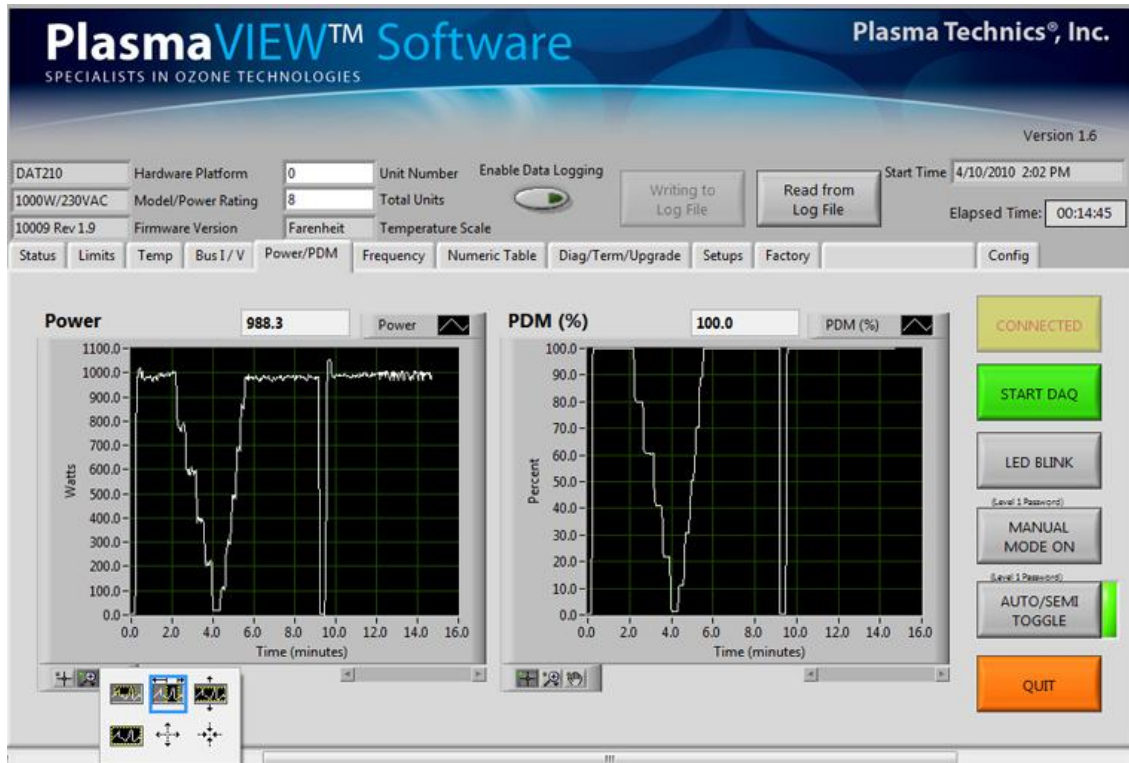


Bus Current & Volts Tab:

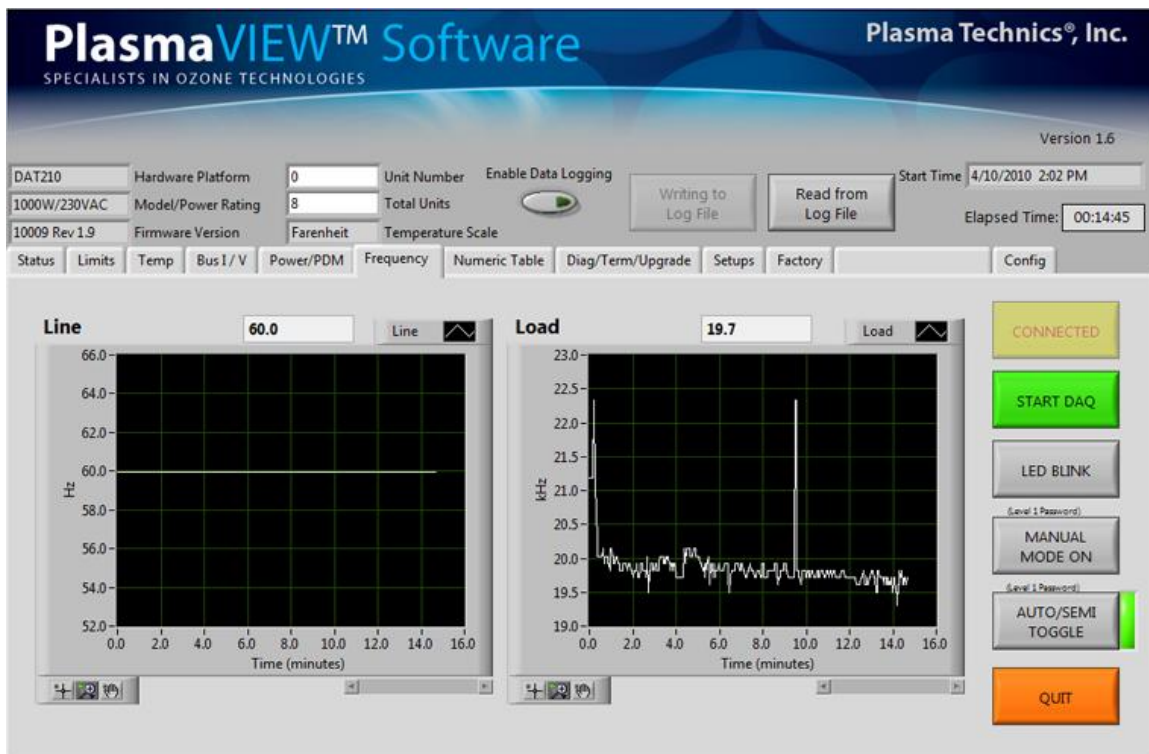


Power & PDM Level Tab:



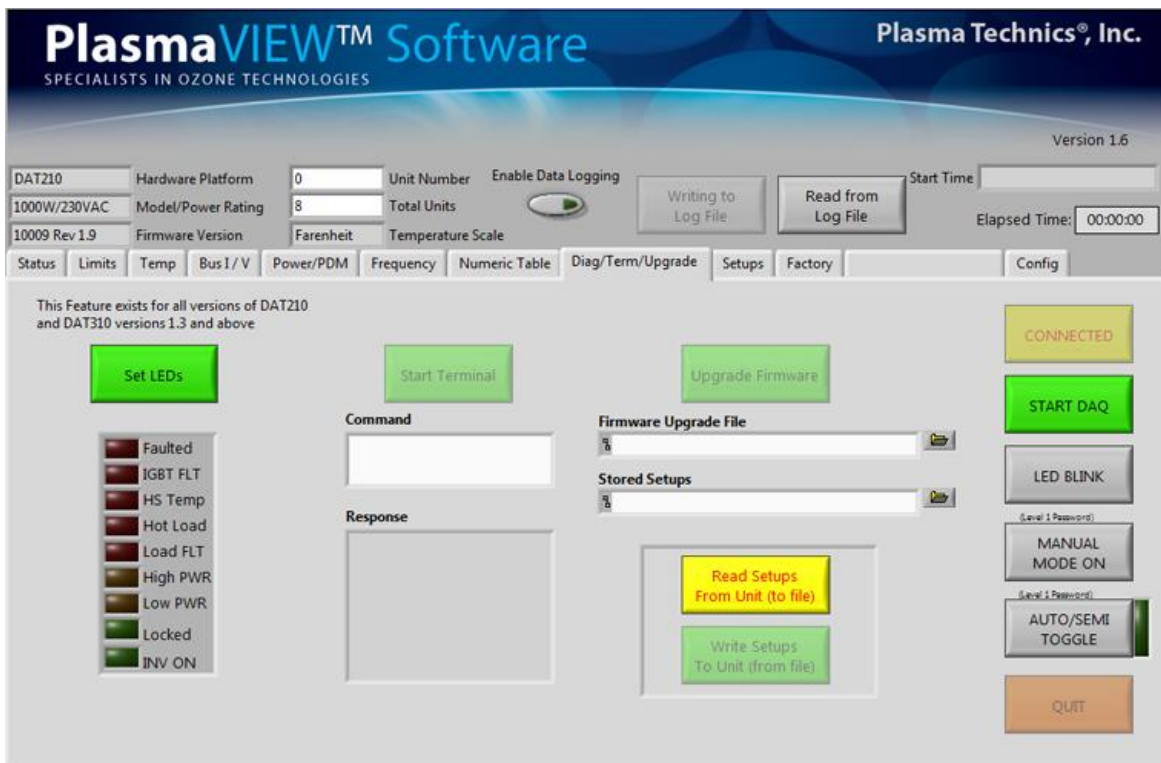
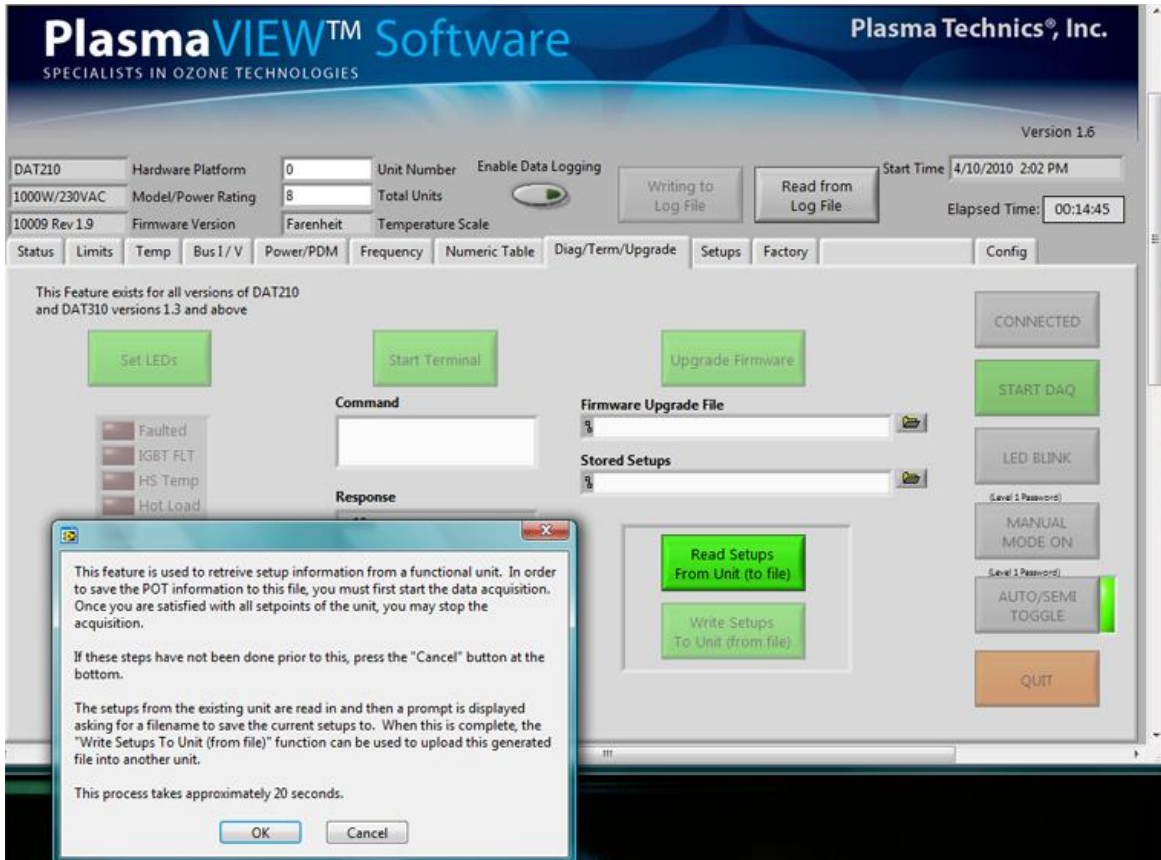


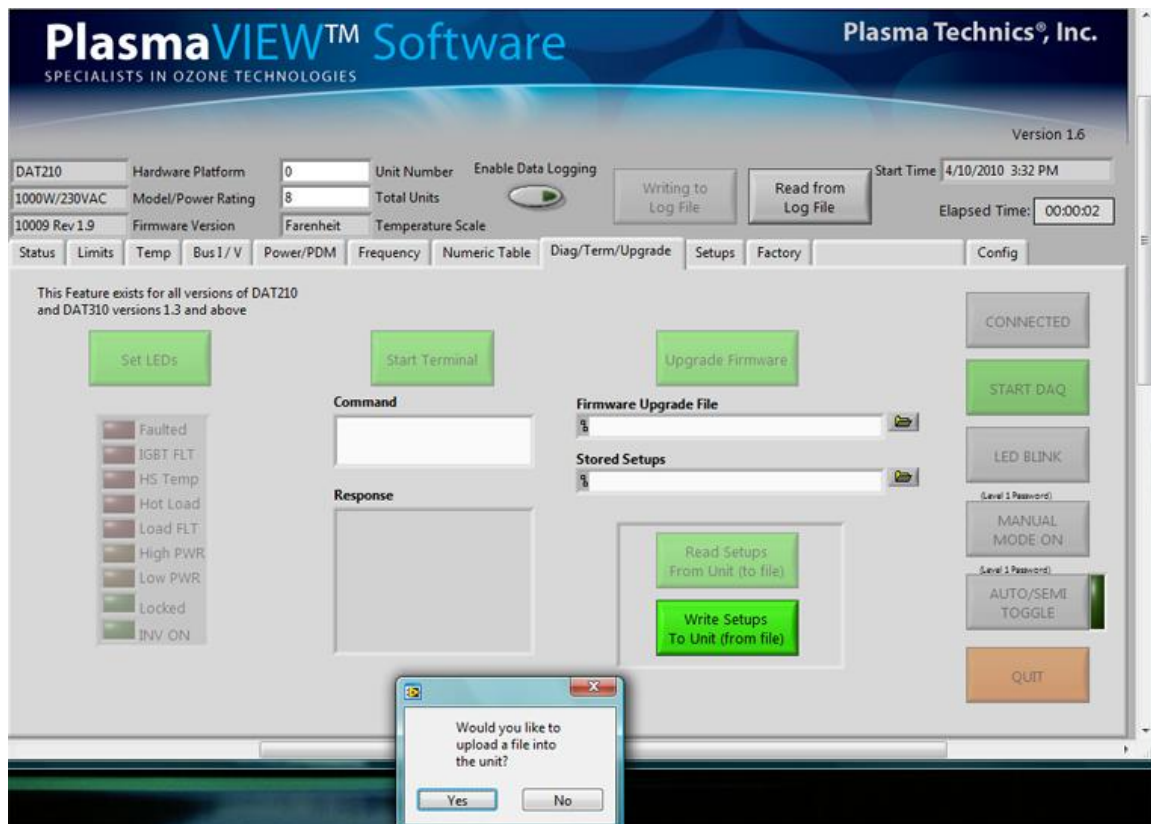
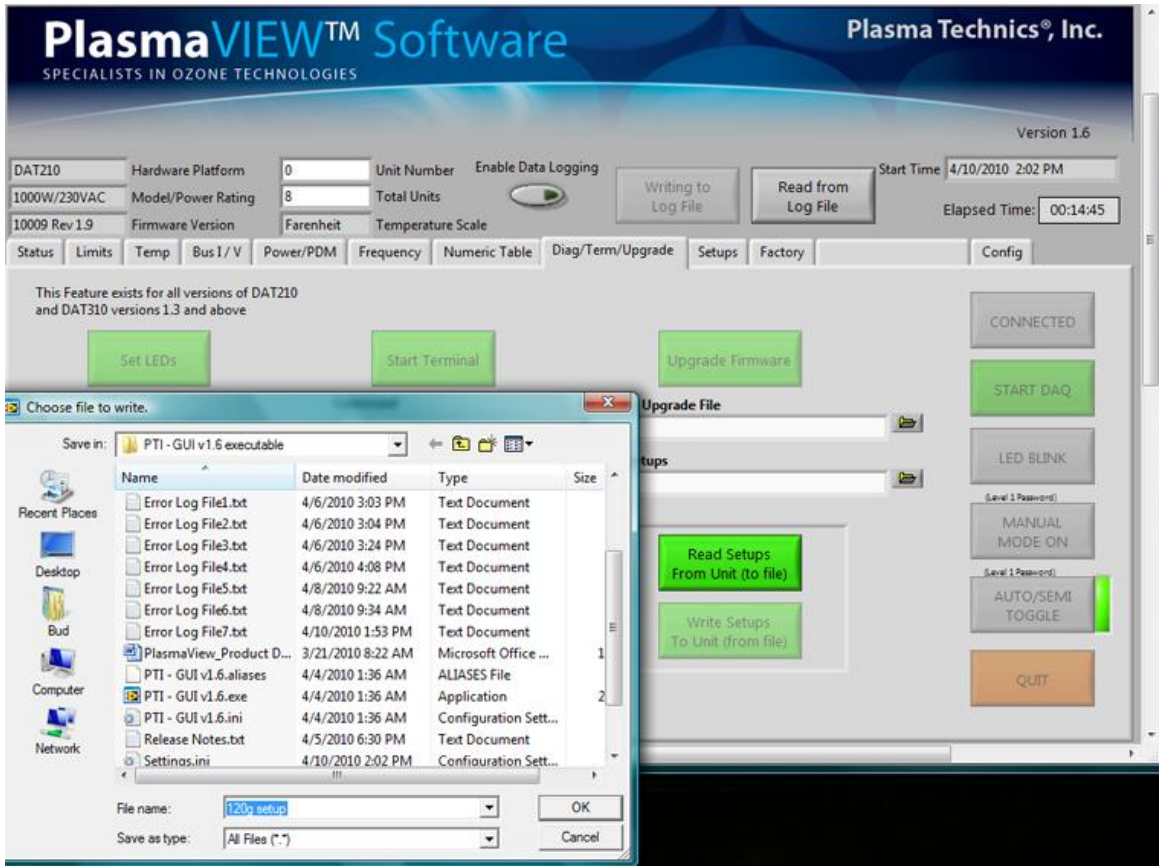
Power/Frequency Tab:

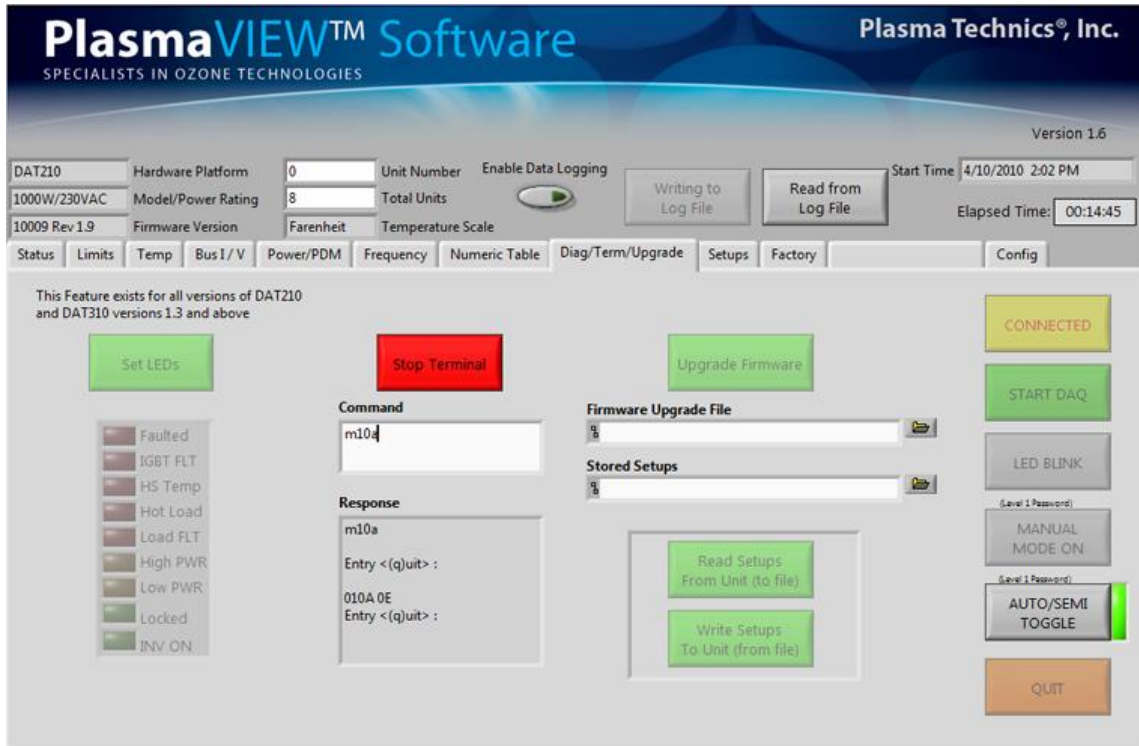


Numeric Table Tab:

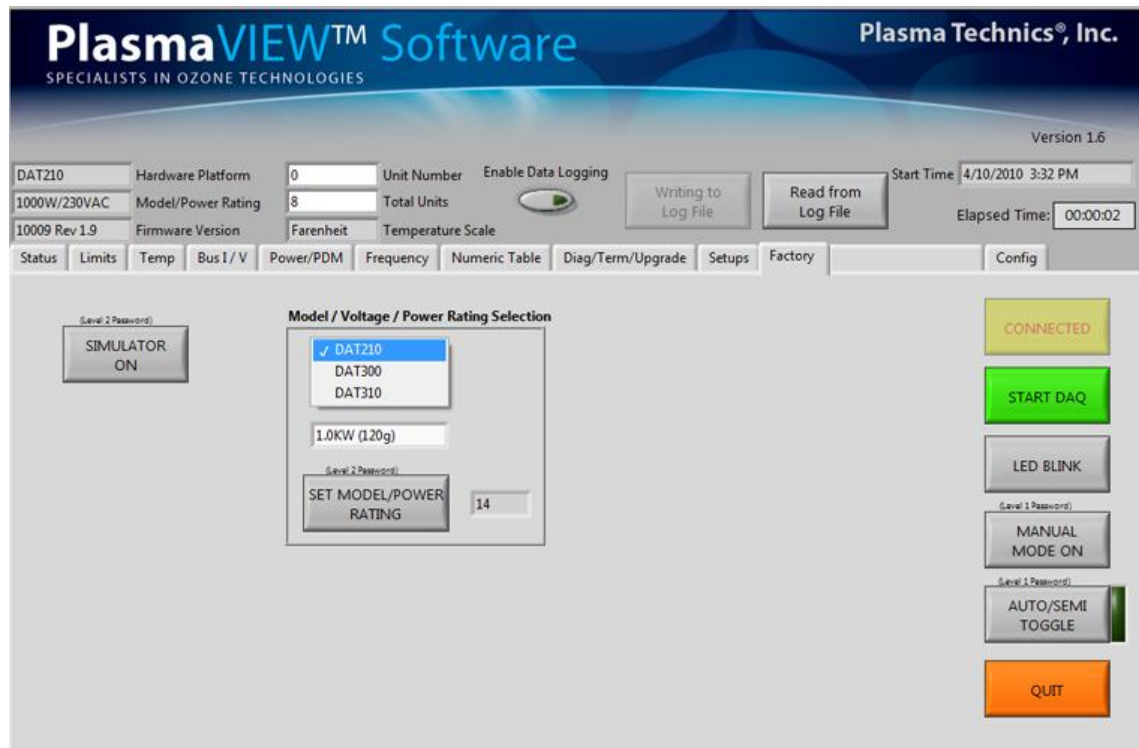
Diagnostics Tab: LED & output test, direct memory commands (password required).

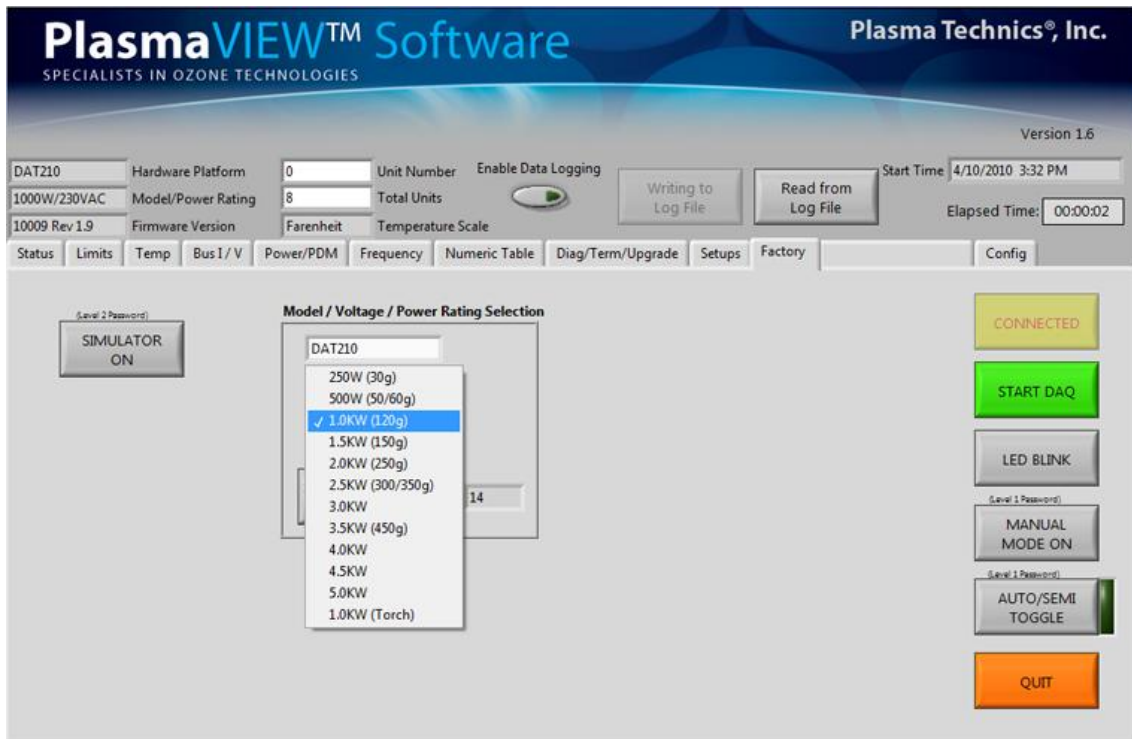
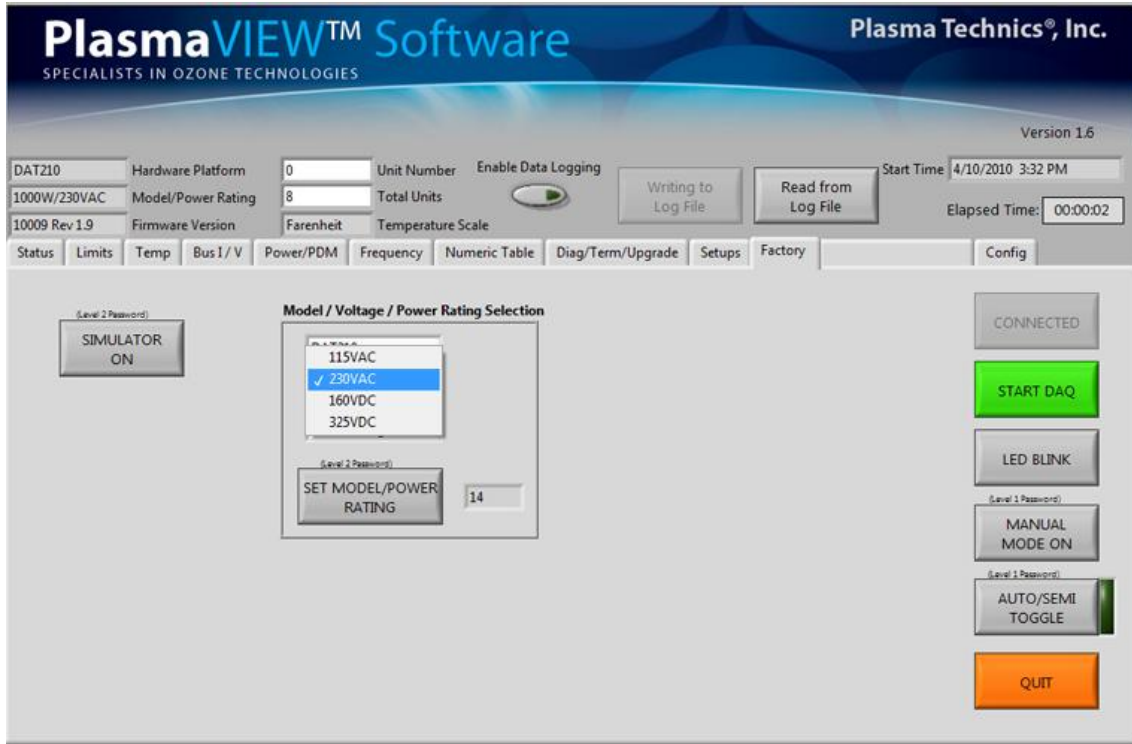


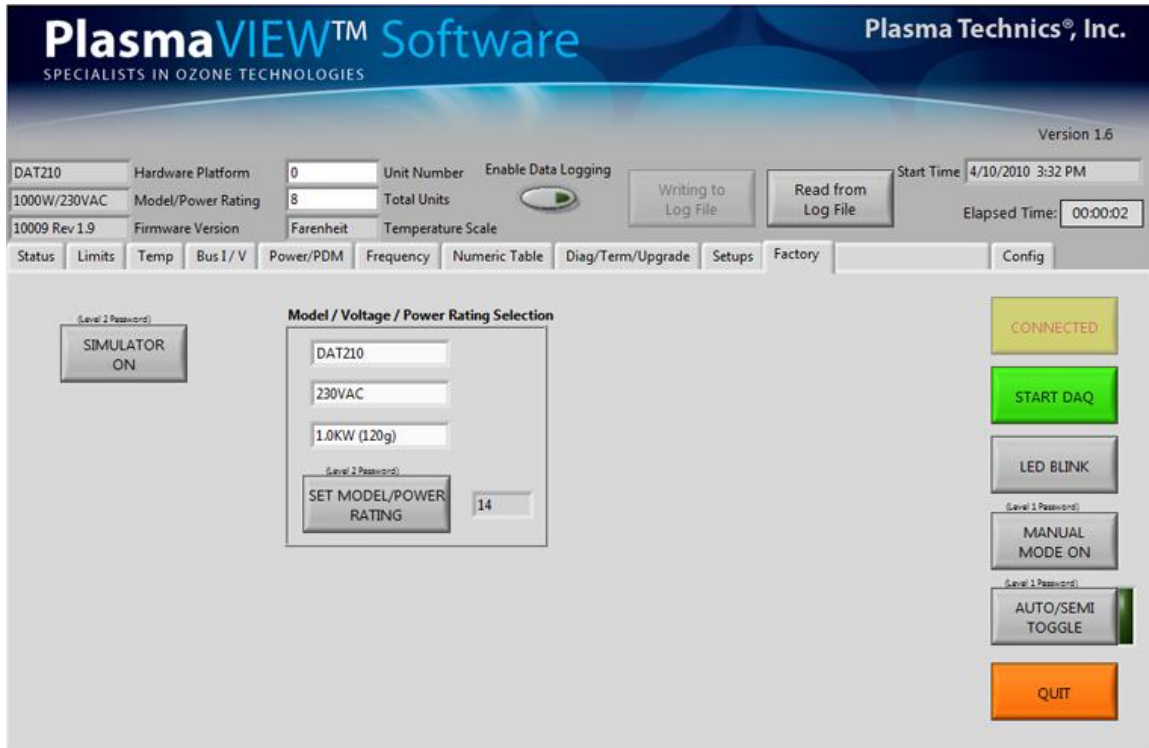




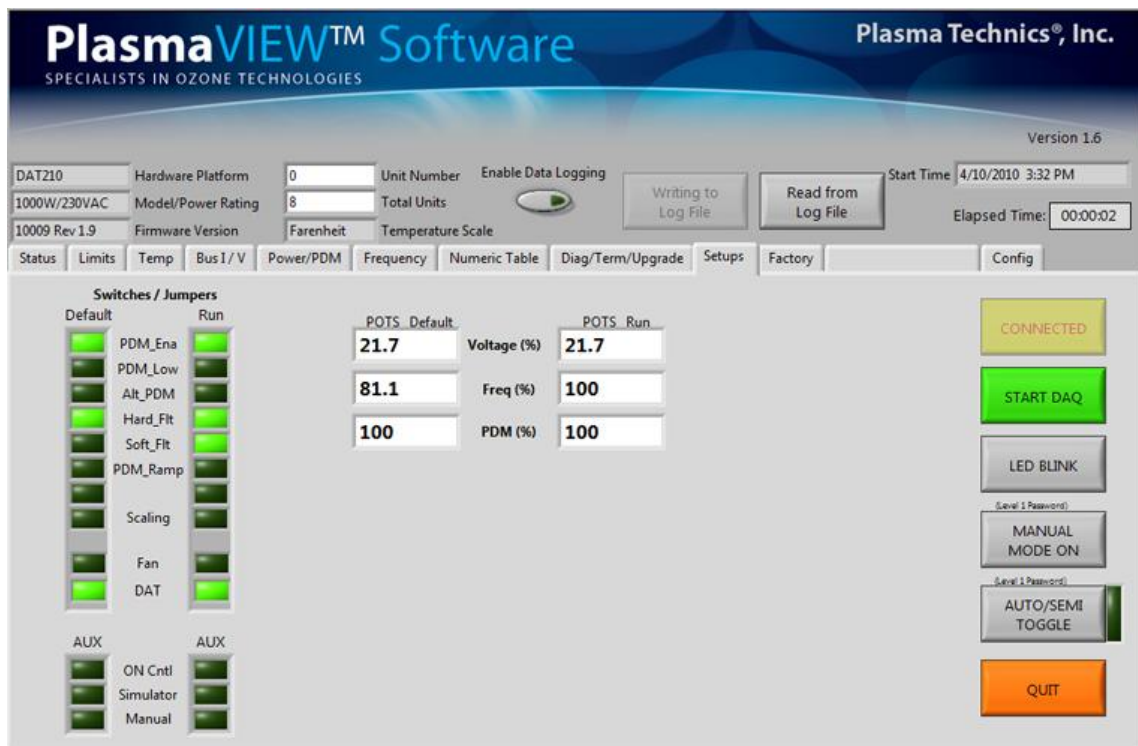
Factory tab:



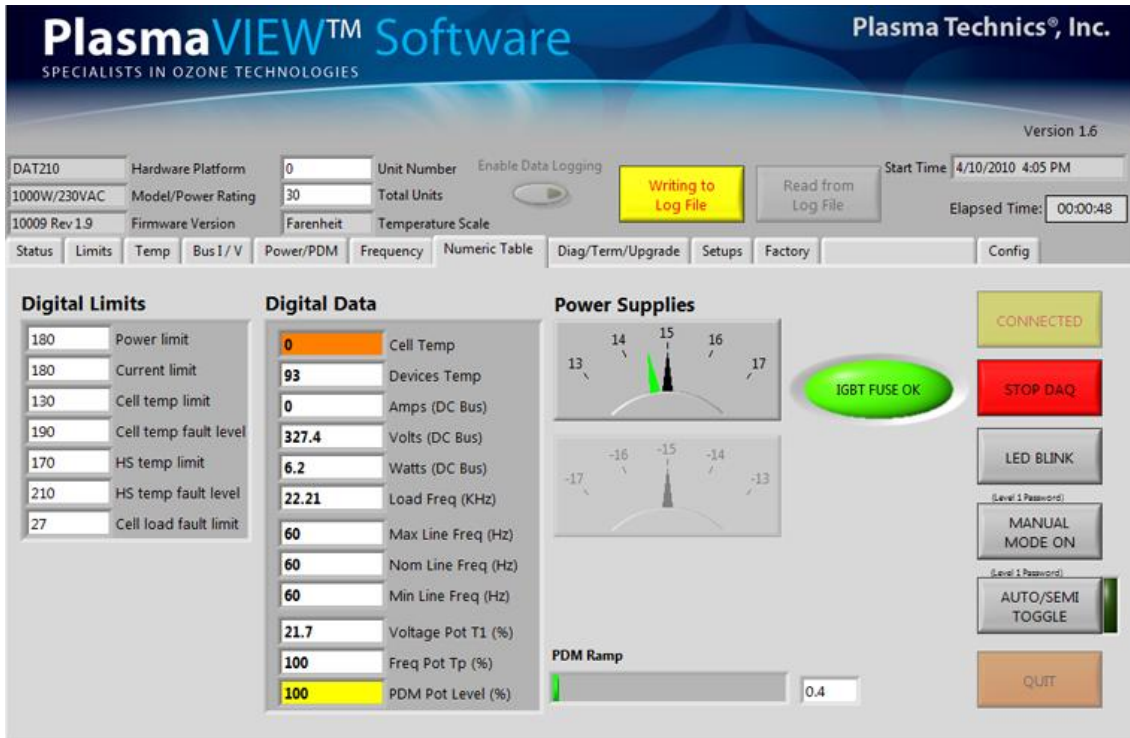




Setups tab:



Write to file button:



Connection items supplied with PlasmaVIEW software :



Serial extension cable



RS232 to 9 pin cable