



OEM

300g @ 5% Plasma Blo₃ck® (Liquid-Cooled)

Patented



For added application information, see the [Plasma Block® Application Guide](#) manual.

Model

Refer to – [Configuration Options Summary Sheet](#)

Silent, Rugged, Reliable, Safe, Efficient, Cost-effective, Compact, Light-Weight, Ceramic dielectrics.
3.4 lbs/day at 9.5% and 6 LPM; 16 lbs/day at 4.7% weight and 60 LPM (Oxygen or Concentrator).

No exposed high-voltage safety hazards.

Precise ozone control using Pulse Density Modulation (PDM) via potentiometer, 4/20ma or 0-10vdc.

Precise Linear Control with Turndown to 1%.

Useful pressure range: 5-98 psi.

Now available with [PlasmaVIEW®](#) software (optional)

Design Features:

- **All high voltage is safely contained within the Plasma Blo₃ck®** thereby eliminating shock hazards and dirt buildup which can cause dangerous flashover. High-voltage wiring is booted and **all** metal grounded.
- **Pre-mounted, seasoned and tested package sub-system** which includes cells, heat exchangers, inlet gas flow meters, all inlet/outlet piping, manifolds, transformers, individual operational status indicators for each Plasma Blo₃ck®, PDM controlled inverter, fans. Design uses the finest quality material and machining for maximum performance and efficiency. All framework components are epoxy powder-coated.
- Directly installable by UL 508a panel house.
- **Modular design for service simplicity.**
- **Instant-ON ozone** production. -- No warm-up time. Ideal for ‘over-the-road’ applications.

- No fragile glass or ceramic cylinders which are prone to breakage during shipping or when used in ‘over-the-road’ applications.
- **Micro Channel[®]** design results in high ozone concentration, reduced high-voltage levels, and more energy-efficient operation. Design has been mechanically and electrically optimized for oxygen. **Concentrator or bottle feed of at least -60°F dew point, filtered, positive-pressure oxygen is required.** Materials in the gap are **ceramic and aluminum.**
- PTI designed **custom ceramic high-voltage feed thru** provides the ultimate in high-voltage and high-pressure integrity, connection reliability, and safety.
- Precision-machined aluminum block eliminates inefficient hot spots and facilitates operation at **high pressures** as well as **vacuum ride through**, should a vacuum pulse occur. Only 1 psi drop with 60 LPM flow. As with any cell, the most predictable performance occurs in the positive-pressure domain. Maximum pressure 98 psi. certified by UL at 5x rating.
- **23 kHz** operating frequency yields **compact design, silent operation, lower cost, and no customer irritation** due to high- pitched whine customarily present with older, medium-frequency designs.
- Advanced design eliminates the possibility of ozone leakage from the body or fittings. The only ozone leak possible is at the customer-tightened ozone fitting. All non-metal materials are ozone rated.
- Ozone level automatically controlled to $\pm 1\%$ from 170v to 260vac.
- Military grade conformal coating eliminates problems associated with condensation and mold, and greatly retards damage caused by accidental ozone exposure.
- The Inverter is a version of PTI’s popular SSD110. All control and interface features of the SSD110 are available in this product. To simplify customer use and serviceability, **ALL of PTI’s Air and Liquid-cooled OEM systems use the same Input/Output control wiring connection points and signal levels.** Said another way, you can unplug the control connector from a 30g Air system and plug it into this 300g Water system, and still be fully operational. No wiring or PLC changes are needed, and changes to your system user manual would not be necessary.
- Line voltage 208 - 240vac, 3 phase, 50/60hz, approx .6pf. Optional supply reactor available for improved power factor. Customer provided soft-start and phase-loss detect if needed.
- **All gas and water connections are 3/8” NPT.**
- Pre-seasoned, calibrated and **pre-adjusted to customers’ individual performance needs.** **Ready to install.** Rigorous 100% performance, as well as burnin tests of all electricals are conducted to ensure the highest level of product **quality, reliability and consistency.**
- Patent Pending design.

Configuration options :

PTI will set up and tune units to the customers' desired specifications.

Oxygen pressure - (5 - 98 psi) [UL 5x rated]

Oxygen flow liters/minute - (.4 - 80 Lpm) or equivalent SCFH

Heat load btu/hr = 8200

Inlet fittings (none, 1/4", 3/8", other)

Outlet fittings (none, 1/4", 3/8", other)

Weight Lbs (Kg) : 69.0 (31.33)

PTI

1900 William Street Racine, WI 53404-187

Copyright 2008 PTI

Web Page <http://www.plasmatechnics.com>

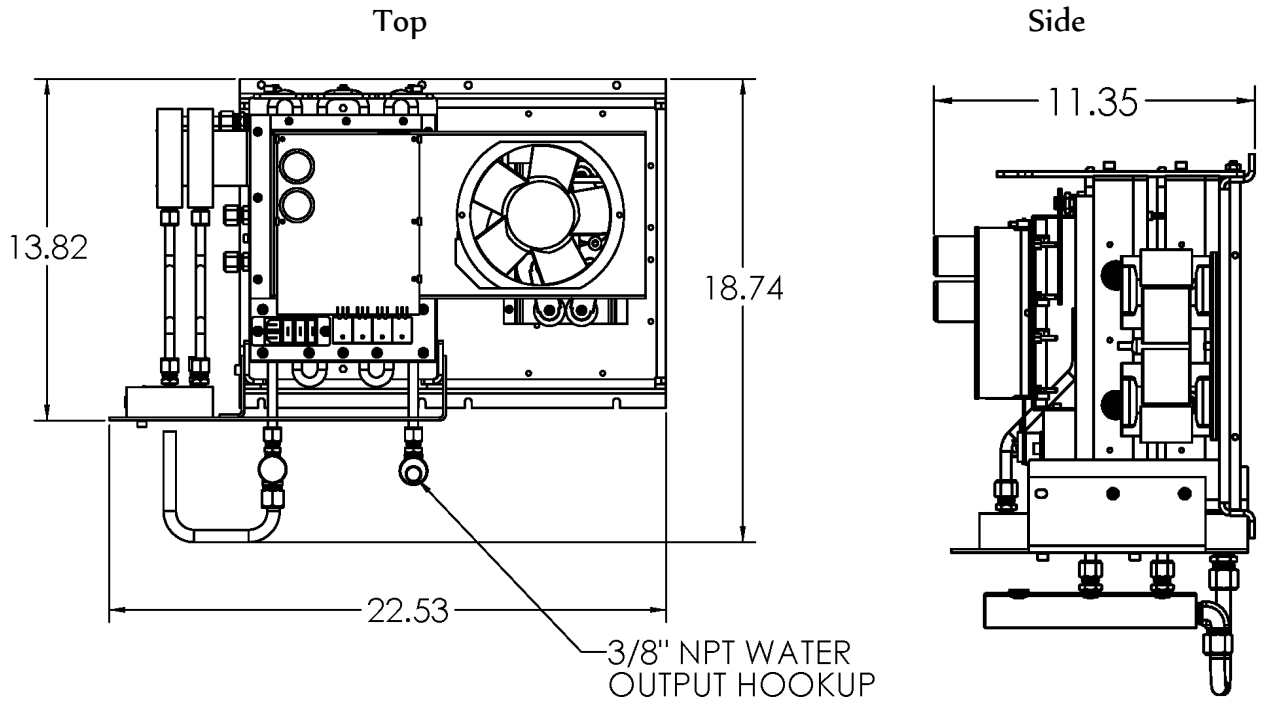
Phone : (262) 637-7180

Fax: (262) 637-7157

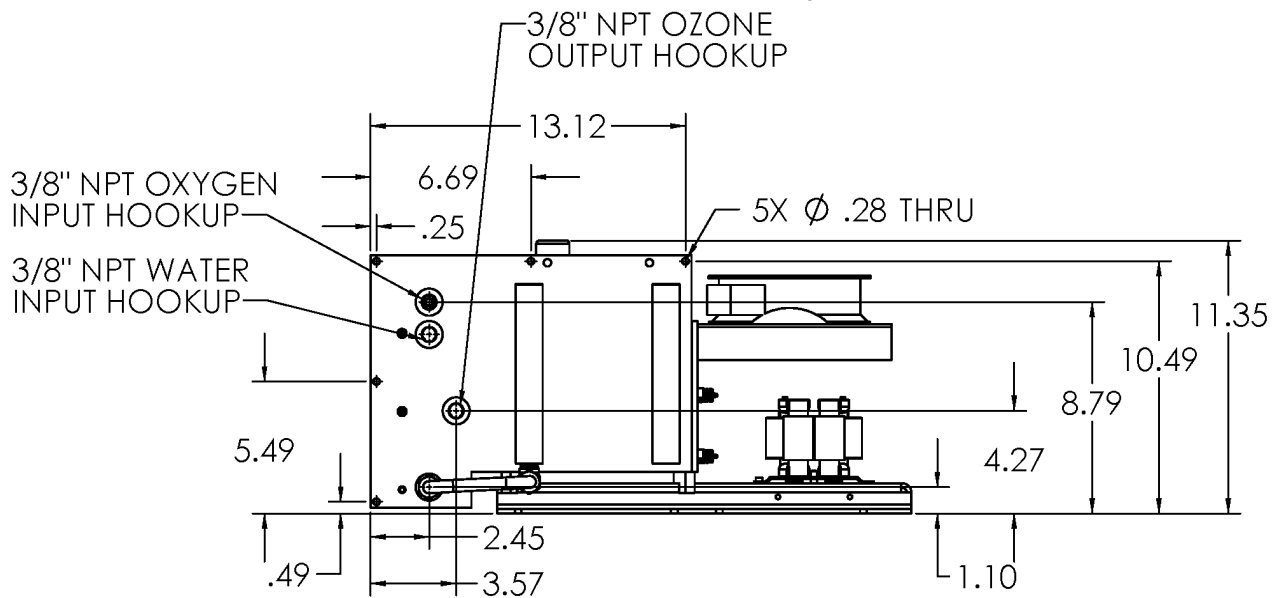
E-Mail: sales@plasmatechnics.com

Installation Drawing:

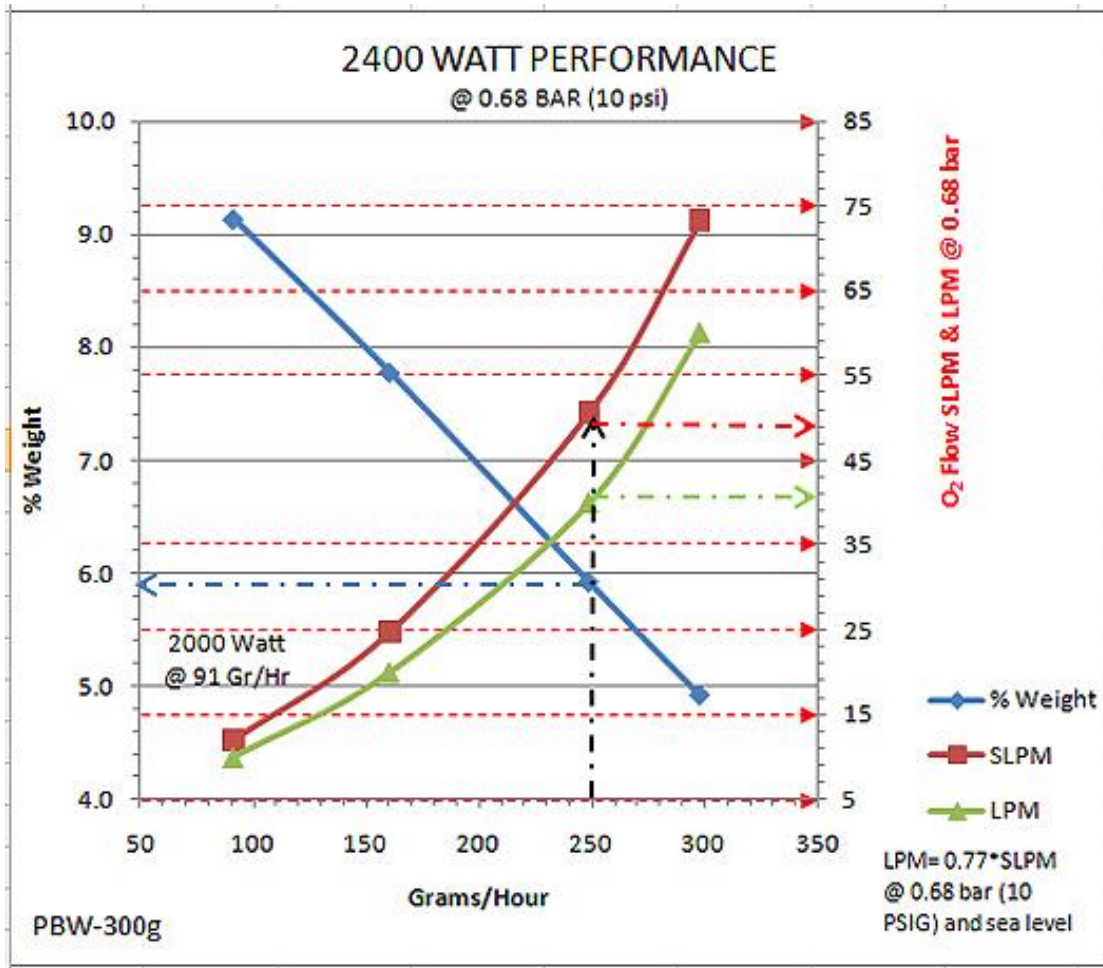
Inches:



Front

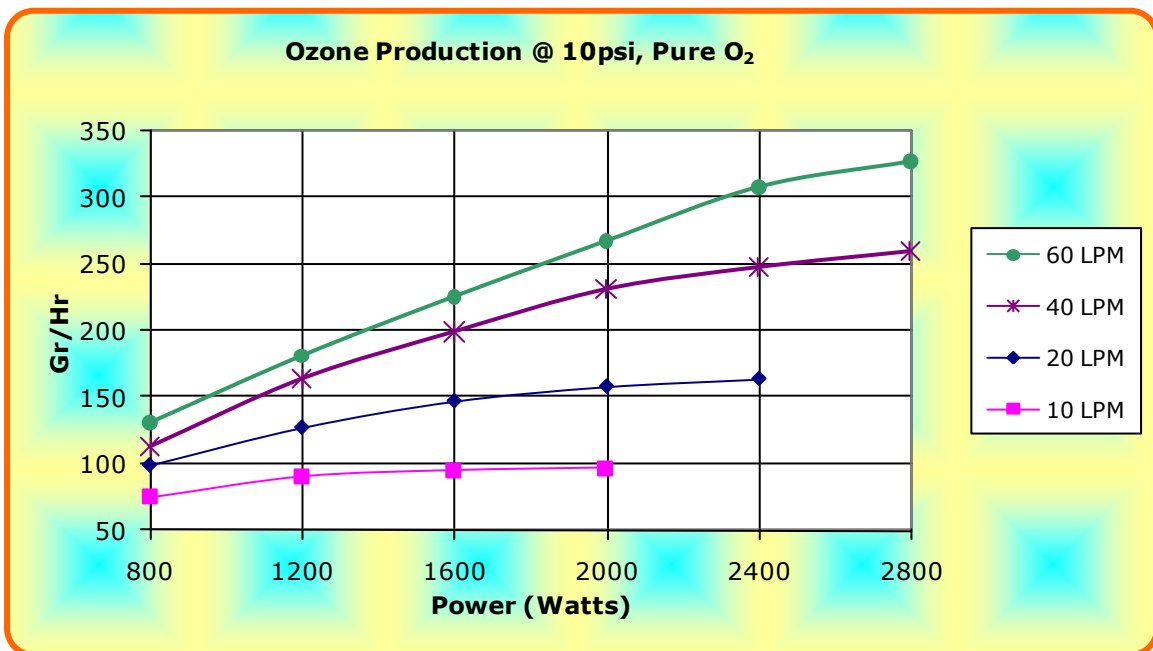
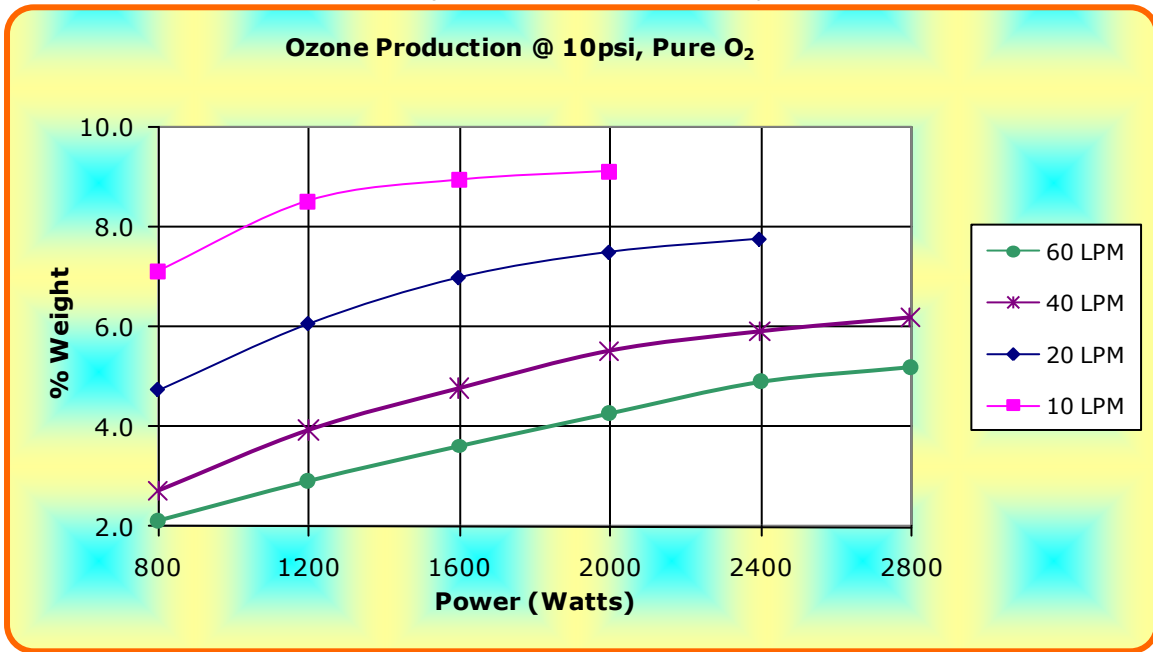


Output Performance:



Output Performance: 10 psi

% Weight vs Power Consumption



Grams / Hour vs Power Consumption

Normal factory POWER setpoint: 2400 watts at FULL PDM (10vdc or 20ma)
Curves are scaled 450g data

Published production-ozone output level (450gr/hr) based on 5% concentration.
Tests conducted at 72°F, 700 MSL. All pressure readings in psig. Ozone in g/nm³.
Flow measured in LPM via uncorrected Rotameter at inlet port. Ozone at 0 psi from sidestream.